

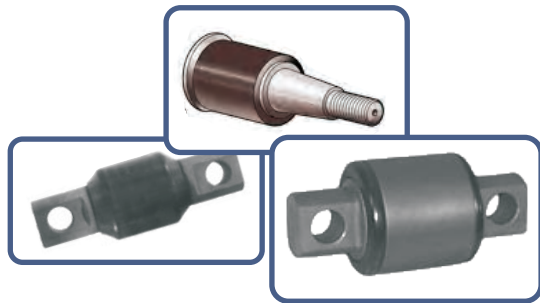
RIGID TORQUE RODS



345-792 - VOLVO, MACK, KENWORTH
345-211 - PETERBILT
345-196 - PETERBILT
345-187 - IHC, MACK
345-898 - VOLVO
345-862 - VOLVO
345-210 - PETERBILT
345-212 - FREIGHTLINER

CBS PARTS and DAYTON PARTS rigid torque rods are available in various lengths with several bushing options to fit common truck suspensions. Manufactured by OEM suppliers or designed to exceed OEM specifications. For reference information, please measure center to center of the torque rod bushings and inside diameter of straddle mounting holes before calling your CBS representative.

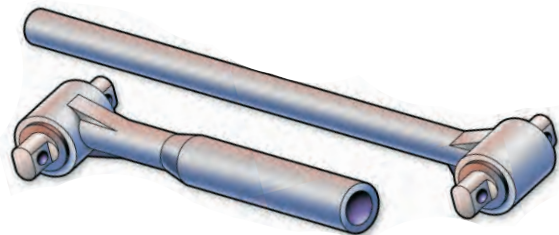
TORQUE ROD BUSHINGS



321-132 - STRADDLEMOUNT
321-223 - STRADDLEMOUNT
321-265 - STRADDLEMOUNT
321-360 - ULTRA ROD® TAPERED

Timely replacement of torque rod bushings will prevent damage to torque rods saving costly downtime and replacement parts. All torque rod bushings are made by Hendrickson or manufactured to OEM specifications.

ULTRA ROD® TWO PIECE COMBO



Fabricate any length of torque rod using genuine Hendrickson ULTRA ROD® components. Ideal for less common applications. Other rod bushing options are available.

345-610 - TUBE-END
345-661 - SPACER END

APPLICATIONS ARE LISTED FOR REFERENCE ONLY
 MANY OTHER APPLICATIONS AND PART NUMBERS ARE AVAILABLE
 PLEASE CALL YOUR CBS PARTS REPRESENTATIVE FOR INFORMATION AND PRICING

Dayton
parts™

SPRING PINS AND BUSHINGS



SPRING PINS

B1310 - FORD FRONT SHACKLE
B1354 - VOLVO FRONT PIN
B1372 - KENWORTH FRONT/REAR
B1434 - INTERNATIONAL FRONT

BUSHINGS

NJK - FORD, INTERNATIONAL - SPLIT
PLK - VOLVO, WESTERN STAR - SPLIT
RNG - FREIGHTLINER, INTERNATIONAL
TB-68 - KENWORTH

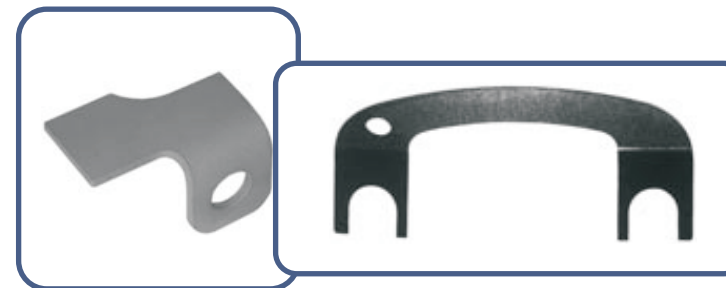
TRUCK SPRINGS

CBS PARTS stocks common Hendrickson truck springs for tandem drive axle suspension. We have access to all makes of front and rear truck suspension leaf springs. For reference, please call your CBS representative.

50-267 - 4" X 10 LEAF, RT380/400
50-275 - 4" X 13 LEAF, RT380/400
50-299 - 4" X 12 LEAF, RT440/480
50-301 - 4" X 13 LEAF, RT440/480



WEAR PADS AND ALIGNMENT SHIMS



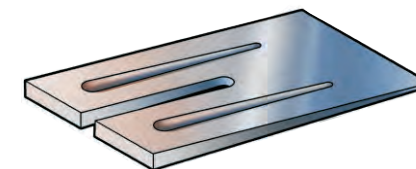
WEAR PADS

334-899 - FREIGHTLINER (LEFT)
334-900 - FREIGHTLINER (RIGHT)

ALIGNMENT SHIMS

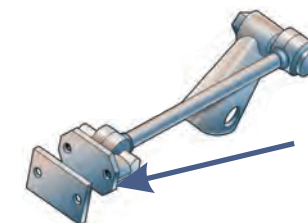
334-526 - 1/16" THICK, 4 3/8" C-C

ALUMINUM WEDGES



A401 - 4" x 1"
A402 - 4" x 2"
A403 - 4" x 3"
A404 - 4" x 4"

BRACKETS

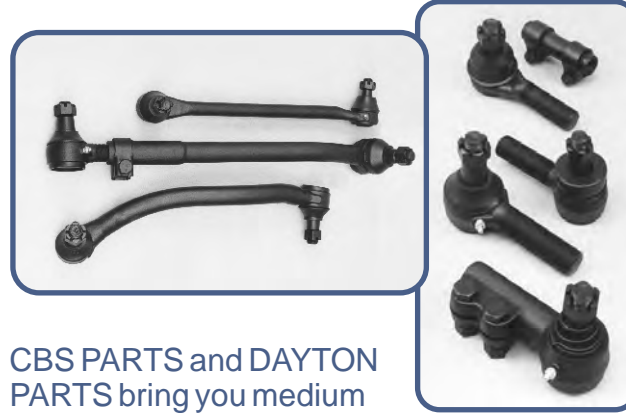


338-181 - 5/8" BRACKET

TIE ROD ENDS AND DRAG LINKS

TIE ROD ENDS

- 310-222 - ES423L - DANA, EATON, FORD, ROCKWELL, VOLVO
- 310-223 - ES423R - DANA, EATON, FORD, ROCKWELL, VOLVO
- 310-228 - ES431L - BLUEBIRD, FREIGHTLINER, MACK, ROCKWELL
- 310-229 - ES431R - BLUEBIRD, FREIGHTLINER, MACK, ROCKWELL
- 310-433 - ES2090L - KENWORTH, THOMAS, EATON, ROCKWELL
- 310-434 - ES2091R - KENWORTH, THOMAS, EATON, ROCKWELL



CBS PARTS and DAYTON PARTS bring you medium and heavy duty drag links and tie rod ends manufactured by O&S, a leader in OEM production parts. These components meet or exceed OEM specifications and are manufactured in North America. The right drag link or tie rod end for the job helps maintain steering integrity and extend tire life.

DRAG LINKS

- 346-189 - FORD L-SERIES 800/900
- 346-370 - PETERBILT
- 346-377 - KENWORTH

KING PIN SETS

- 300-216 - ROCKWELL 18,000 lbs
- 300-284 - ROCKWELL 13,200 lbs
- 300-232 - ROCKWELL 12,000 lbs
- 300-297 - EATON - 18,000 lbs
- 300-268 - SPICER - 10,000 lbs
- 300-288 - GMC - 7,000 lbs
- 300-173 - GMC - 11,000 lbs

CBS PARTS and DAYTON PARTS bring you medium and heavy duty standard king pin sets which meet full OEM specifications. Our king pin sets are manufactured in North America, usually by the OEM supplier. Get the quality and service you expect at competitive pricing. CBS parts stocks a wide range of common and not so common King Pin Sets.



APPLICATIONS ARE FOR REFERENCE ONLY
MANY OTHER APPLICATIONS AND PART NUMBERS
ARE AVAILABLE. PLEASE CALL YOUR CBS PARTS
REPRESENTATIVE FOR INFORMATION AND PRICING



CBS PARTS LTD.
HEAVY DUTY TRUCK & TRAILER PARTS

The Right Parts... On Time... At The Right Price

CBS Kamloops (250) 314-1000
CBS Surrey (604) 888-1944
CBS Price George (250) 563-9330
CBS Burnaby (604) 299-0681
Truckline Parts - Abbotsford (604) 859-6731



CBS PARTS LTD.
HEAVY DUTY TRUCK & TRAILER PARTS

TRUCK STEERING AND SUSPENSION PRODUCTS



BATCO

Brake and
Wheel Products

**stanley
springs**

Spring Products

**dayton
parts**

Suspension
and Steering Products

MAY 1, 2010